

1

2

3

4

5

6

A

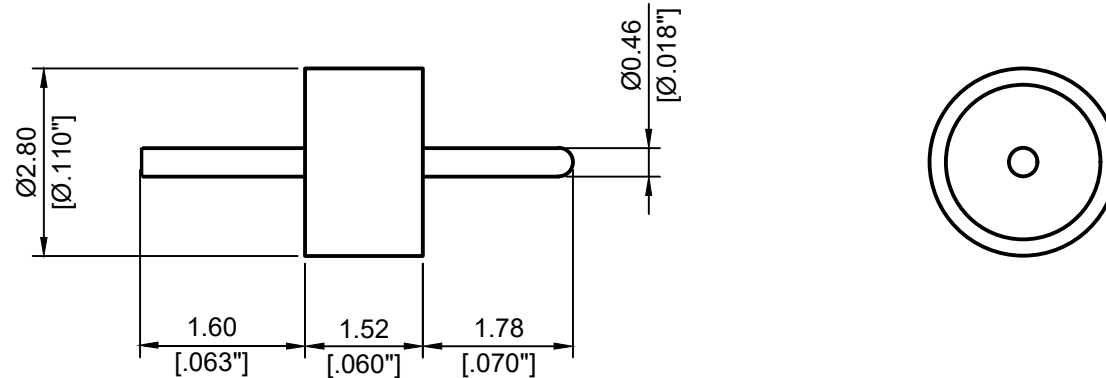
A

B



B

C

C



1. Pin extensions are $\pm 0.005''$
2. Nominal Impedance: 50Ω
3. Frequency Range: DC-18GHz
4. $R1 \leq 1.1013 \times 10^{-3} \text{ Pa} \cdot \text{cm}^3/\text{s He}$
5. Temperature range: $-55 \sim 400^\circ\text{C}$

| | | | | | | | |
|--|--|--|--|---|--|-----------------------------|--|
|  <p>4th Floor, West Unit, Incubation Building 1 Guanghua Lu, Nanjing TEL: 025-84304950 FAX: 025-84304959 WWW.ALLWINTEK.COM</p> | | DIRECTION OF VIEW  | | UNIT mm | | TITLE GLASS BEAD | |
| PROPRIETARY INFORMATION: THE INFORMATION WITHIN THIS DRAWING IS PROPRIETARY AND SHALL NOT BE USED OR DISCLOSED WITHOUT PRIOR WRITTEN PERMISSION FROM ALLWIN TECHNOLOGY. | | | | DRAWN Haimin Zhang | | DWG NO. AL-281645 | |
| | | | | CHECKED Shaoqin Du | | | |
| | | | | APPR. Dong Wu | | | |
| | | | | <small>UNLESS OTHERWISE SPECIFIED 1. REMOVE ALL BERRS, BREAK ALL CORNERS, SHARP EDGES 0.05 R MAX 2. LINEARITY TOLERANCES ± 0.2, ANGLE TOLERANCES $\pm 1^\circ$ 3. DIAMETERS ON COMMON CENTERS TO BE CONCENTRIC WITHIN 0.1 4. ALL DIMENSIONS ARE AFTER PLATING, SURFACE FINISHED</small> | | | |
| LTR DESCRIPTION DATE APPR. | | DO NOT SCALE DRAWING | | SIZE A4 a | | SCALE 10:1 | |
| | | | | REV. V2.0 | | SHEET 1/1 | |

1

2

5

6

D

D