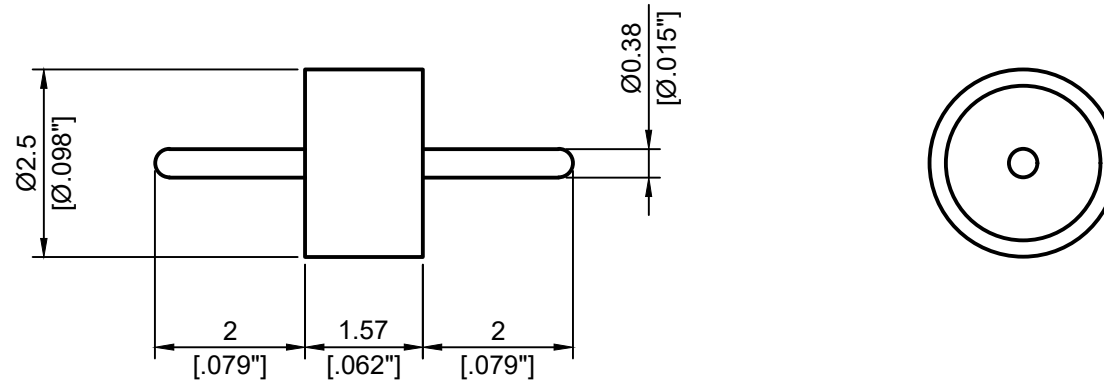




1、将AL-251638的针长度尺寸均修改为2mm，其它尺寸电性能等不做任何改变。详见图纸



1. Pin extensions are $\pm 0.005''$
2. Nominal Impedance: 50Ω
3. Frequency Range: DC-28GHz
4. $R1 \leq 1.1013 \times 10^{-3} \text{ Pa} \cdot \text{cm}^3/\text{s He}$
5. Temperature range: $-55 \sim 400^\circ\text{C}$

 <p>4th Floor, West Unit, Incubation Building 1 Guanghua Lu, Nanjing TEL: 025-84304950 FAX: 025-84304959 WWW.ALLWINTEK.COM</p>		DIRECTION OF VIEW 		UNIT mm	TITLE GLASS BEAD
PROPRIETARY INFORMATION: THE INFORMATION WHIN THIS DRAWING IS PROPRIETARY AND SHALL NOT BE USED OR DISCLOSED WITHOUT PRIOR WRITTEN PERMISSION FROM ALLWIN TECHNOLOGY.		DRAWN Haimin Zhang	DWG NO. AL251638-01		
		CHECKED Shaoqin Du			
		APPR. Dong Wu			
		<small>UNLESS OTHERWISE SPECIFIED 1. REMOVE ALL BERRS, BREAK ALL CORNERS, SHARP EDGES 0.05 R MAX 2. LINEARITY TOLERANCES ± 0.2, ANGLE TOLERANCES $\pm 1^\circ$ 3. DIAMETERS ON COMMON CENTERS TO BE CONCENTRIC WITHIN 0.1 4. ALL DIMENSIONS ARE AFTER PLATING, SURFACE FINISHED</small>			
LTR DESCRIPTION DATE APPR.	DO NOT SCALE DRAWING		SIZE A4 a	SCALE 10:1	REV. V2.0
					SHEET 1/1