

1

2

3

4

5

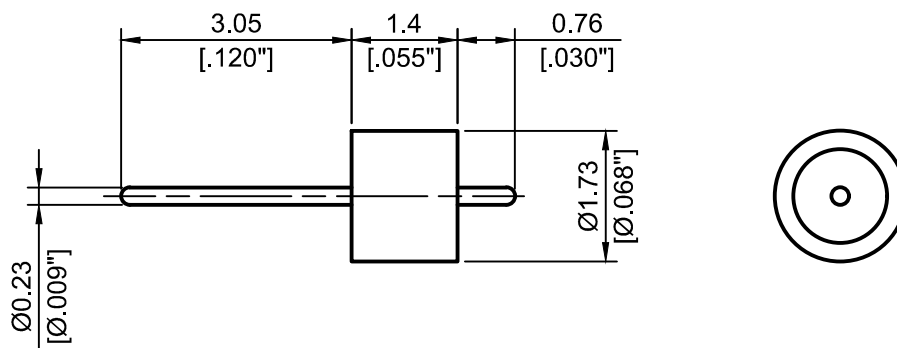
6

A

B

C

D



- 1. Pin extensions are $\pm 0.005''$
- 2. Nominal Impedance: 50Ω
- 3. Frequency Range: DC-67GHz
- 4. Insulation: $\geq 1 \times 10^{10}\Omega$
- 5. DWV: 500V/60S OK
- 6. $R1 \leq 1.1013 \times 10^{-3} \text{ Pa} \cdot \text{cm}^3/\text{s He}$
- 7. Temperature range: $-55 \sim 400^\circ\text{C}$



4th Floor, West Unit,
Incubation Building 1
Guanghua Lu, Nanjing
TEL: 025-84304950
FAX: 025-84304959
WWW.ALLWINTEK.COM

DIRECTION OF VIEW



UNIT

mm

TITLE

GLASS BEAD

PROPRIETARY INFORMATION: THE INFORMATION WITHIN THIS DRAWING IS PROPRIETARY AND SHALL NOT BE USED OR DISCLOSED WITHOUT PRIOR WRITTEN PERMISSION FROM ALLWIN TECHNOLOGY.

DRAWN Haimin Zhang

CHECKED Shaoqin Du

APPR. Dong Wu

DWG NO.

AL-171423-02

UNLESS OTHERWISE SPECIFIED
 1. REMOVE ALL BURRS, BREAK ALL CORNERS, SHARP EDGES 0.05 R MAX
 2. LINEARITY TOLERANCES ± 0.2 ; ANGLE TOLERANCES $\pm 1^\circ$
 3. DIAMETERS ON COMMON CENTERS TO BE CONCENTRIC WITHIN 0.1
 4. ALL DIMENSIONS ARE AFTER PLATING, SURFACE FINISHED

OUTLINE DRAWING

LTR	DESCRIPTION	DATE	APPR.

DO NOT SCALE DRAWING

SIZE A4 a

SCALE 10:1

REV. V2.0

SHEET 1/1

1

2

5

6