

1

2

3

4

5

6

A

B

C

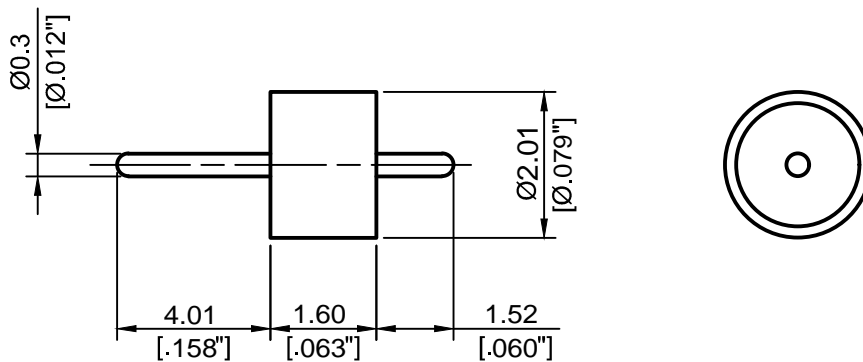
D

A


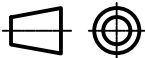
B

C

D



1. Pin extensions are ± 0.005 "
2. Nominal Impedance: 50Ω
3. Frequency Range: DC-46GHz
4. $R1 \leq 1.1013 \times 10^{-3} \text{ Pa} \cdot \text{cm}^3/\text{s He}$
5. Temperature range: $-55 \sim 400^\circ\text{C}$

 <p>ALLWIN TECHNOLOGY</p>		4th Floor, West Unit, Incubation Building 1 Guanghua Lu, Nanjing TEL: 025-84304950 FAX: 025-84304959 WWW.ALLWINTEK.COM		DIRECTION OF VIEW 		UNIT mm		TITLE GLASS BEAD	
		PROPRIETARY INFORMATION: THE INFORMATION WITHIN THIS DRAWING IS PROPRIETARY AND SHALL NOT BE USED OR DISCLOSED WITHOUT PRIOR WRITTEN PERMISSION FROM ALLWIN TECHNOLOGY.		DRAWN Haimin Zhang		CHECKED Shaoqin Du		DWG NO. AL-304015	
				APPR. Dong Wu		UNLESS OTHERWISE SPECIFIED: 1. REMOVE ALL BURRS, BREAK ALL CORNERS, SHARP EDGES 0.05 R MAX 2. LINEARITY TOLERANCES ± 0.2 , ANGLE TOLERANCES $\pm 1^\circ$ 3. DIAMETERS ON COMMON CENTERS TO BE CONCENTRIC WITHIN 0.1 4. ALL DIMENSIONS ARE AFTER PLATING, SURFACE FINISHED ✓		OUTLINE DRAWING	
LTR	DESCRIPTION	DATE	APPR.	DO NOT SCALE DRAWING		SIZE A4 a	SCALE 10:1	REV. V2.0	SHEET 1/1

1

2

5

6