

1

2

3

4

5

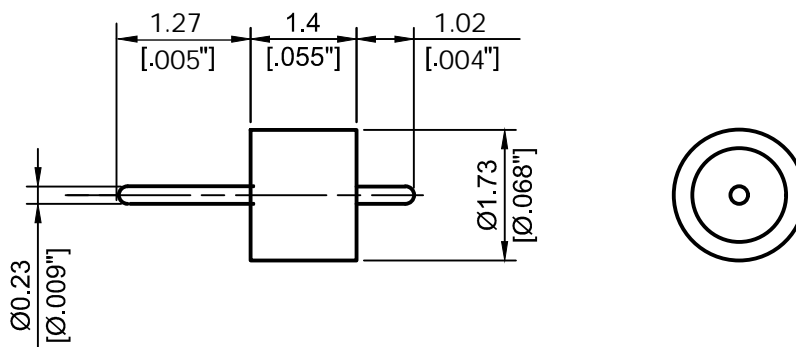
6

A

B

C

D



- 1. Pin extensions are $\pm 0.005''$
- 2. Nominal Impedance: 50Ω
- 3. Frequency Range: DC-67GHz
- 4. Insulation: $\geq 1 \times 10^{10}\Omega$
- 5. DWV: 500V/60S OK
- 6. $R1 \leq 1.1013 \times 10^{-3} \text{ Pa} \cdot \text{cm}^3/\text{s He}$
- 7. Temperature range: $-55 \sim 400^\circ\text{C}$




4th Floor, West Unit,
Incubation Building 1
Guanghua Lu, Nanjing
TEL: 025-84304950
FAX: 025-84304959
WWW.ALLWINTEK.COM

PROPRIETARY INFORMATION: THE INFORMATION WITHIN THIS DRAWING IS PROPRIETARY AND SHALL NOT BE USED OR DISCLOSED WITHOUT PRIOR WRITTEN PERMISSION FROM ALLWIN TECHNOLOGY.

LTR	DESCRIPTION	DATE	APPR.

DIRECTION OF VIEW



UNIT
mm

TITLE
GLASS BEAD

DRAWN	Haimin Zhang
CHECKED	Shaoqin Du
APPR.	Dong Wu

DWG NO.
AL-171423

UNLESS OTHERWISE SPECIFIED
1. REMOVE ALL BURRS, BREAK ALL CORNERS, SHARP EDGES 0.05 R MAX
2. LINEARITY TOLERANCES ± 0.2 ; ANGLE TOLERANCES $\pm 1^\circ$
3. DIAMETERS ON COMMON CENTERS TO BE CONCENTRIC WITHIN 0.1
4. ALL DIMENSIONS ARE AFTER PLATING, SURFACE FINISHED

OUTLINE DRAWING

DO NOT SCALE DRAWING	SIZE A4 a	SCALE 10:1	REV. V2.0	SHEET 1/1
----------------------	-----------	------------	-----------	-----------

1

2

5

6