

1

2

3

4

5

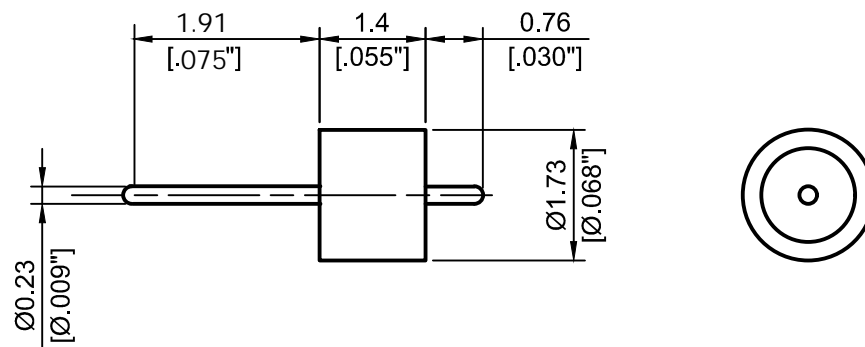
6

A


B

C

D




1. Pin extensions are  $\pm 0.005"$
2. Nominal Impedance:  $50\Omega$
3. Frequency Range: DC-67GHz
4. Insulation:  $\geq 1 \times 10^{10}\Omega$
5. DWV: 500V/60S OK
6.  $R1 \leq 1.1013 \times 10^{-3} \text{ Pa} \cdot \text{cm}^3/\text{s He}$
7. Temperature range:  $-55 \sim 400^\circ\text{C}$



ALLWIN TECHNOLOGY

4th Floor, West Unit,  
Incubation Building 1  
Guanghua Lu, Nanjing  
TEL: 025-84304950  
FAX: 025-84304959  
WWW.ALLWINTEK.COM

DIRECTION OF VIEW



UNIT

mm

TITLE

**GLASS BEAD**

PROPRIETARY INFORMATION: THE INFORMATION WITHIN THIS DRAWING IS PROPRIETARY AND SHALL NOT BE USED OR DISCLOSED WITHOUT PRIOR WRITTEN PERMISSION FROM ALLWIN TECHNOLOGY.

DRAWN Haimin Zhang

DWG NO.

**AL-171423**

CHECKED Shaoqin Du

**OUTLINE DRAWING**

APPR. Dong Wu

UNLESS OTHERWISE SPECIFIED:  
1. REMOVE ALL BURRS, BREAK ALL CORNERS, SHARP EDGES 0.05 R MAX  
2. LINEARITY TOLERANCES  $\pm 0.2$ ; ANGLE TOLERANCES  $\pm 1^\circ$   
3. DIAMETERS ON COMMON CENTERS TO BE CONCENTRIC WITHIN 0.1  
4. ALL DIMENSIONS ARE AFTER PLATING, SURFACE FINISHED

LTR	DESCRIPTION	DATE	APPR.

DO NOT SCALE DRAWING

SIZE A4 a	SCALE 10:1	REV. V2.0	SHEET 1/1
-----------	------------	-----------	-----------

1

2

5

6